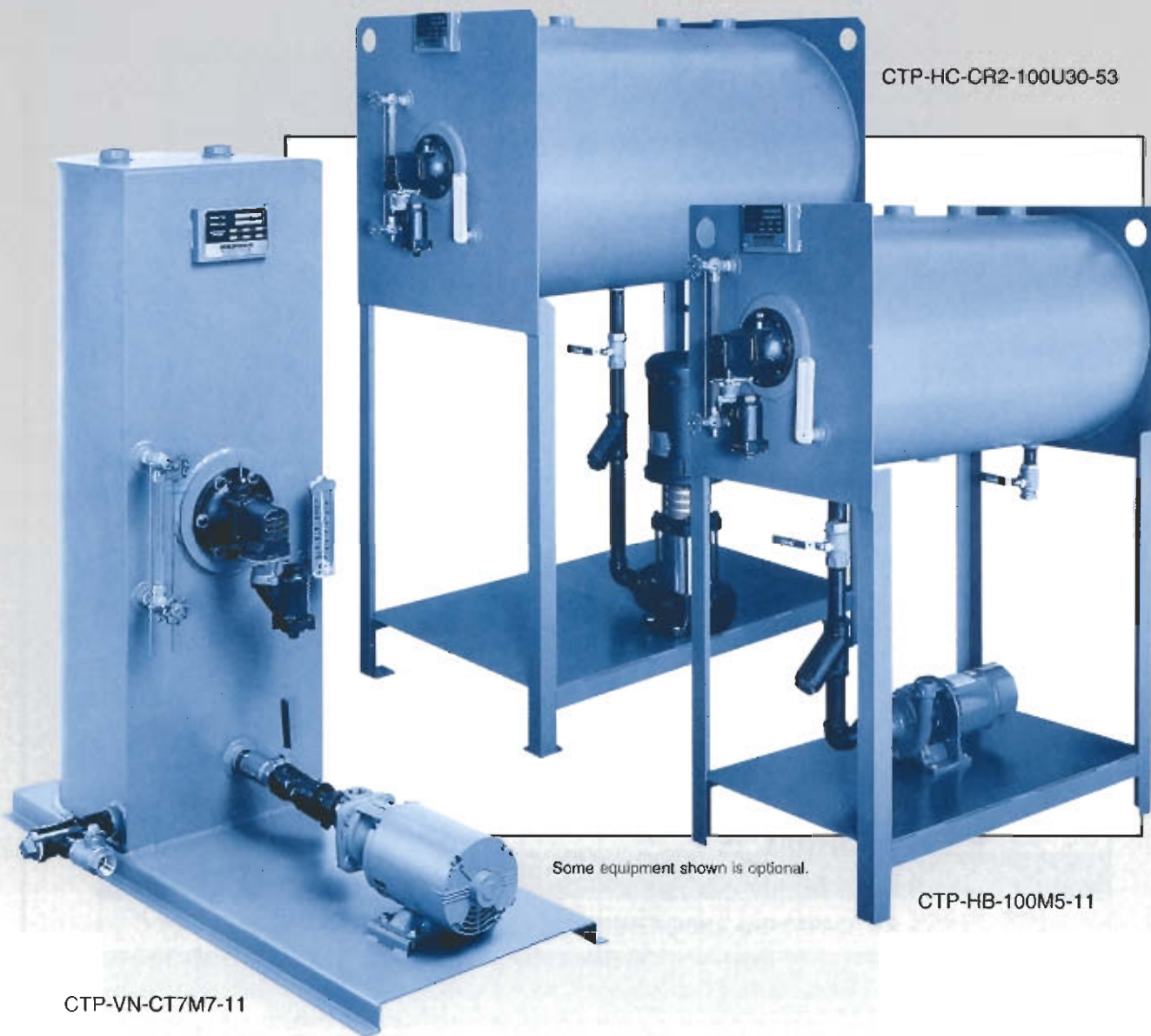


## BOILER FEED



Some equipment shown is optional.

### CTP CCT CCX SERIES

**HORIZONTAL AND  
VERTICAL MODELS BY  
■ CANADA'S ▽ BOILER ▽ MAKER ■**

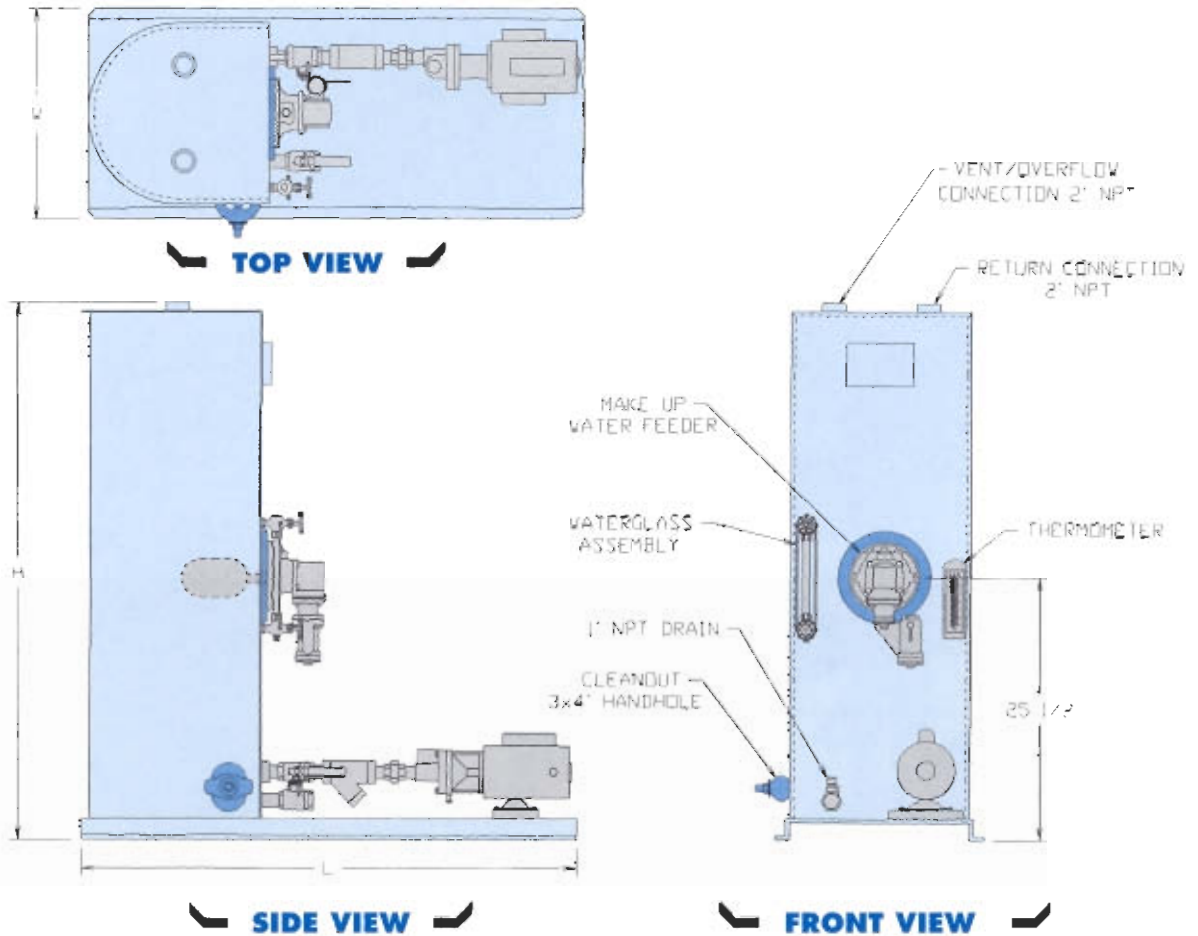
**CONDENSATE/  
FEEDWATER  
SYSTEMS**

# CTP-V BOILER FEED SERIES

UNIQUE ■ VERTICAL ■ DESIGN

## VERTICAL CONDENSATE/FEED TANKS FOR CONDENSATE RETURN AND BOILER FEED

SIMPLE DESIGN ■ LOWER COST



STANDARD CTP-V SERIES TANK DIMENSIONS AND CAPACITIES						
MODEL	L	W	H	IMP. GAL.	U.S. GAL.	WEIGHT (LB)
VN	46	20	51	39	47	220
VP	53	27	51	62	99	320
VQ	59	33	63	145	174	475

**DIMENSIONS ARE INCHES**

Certified dimensions. Specifications and drawings are available on request.  
We assume no responsibility for errors in data.

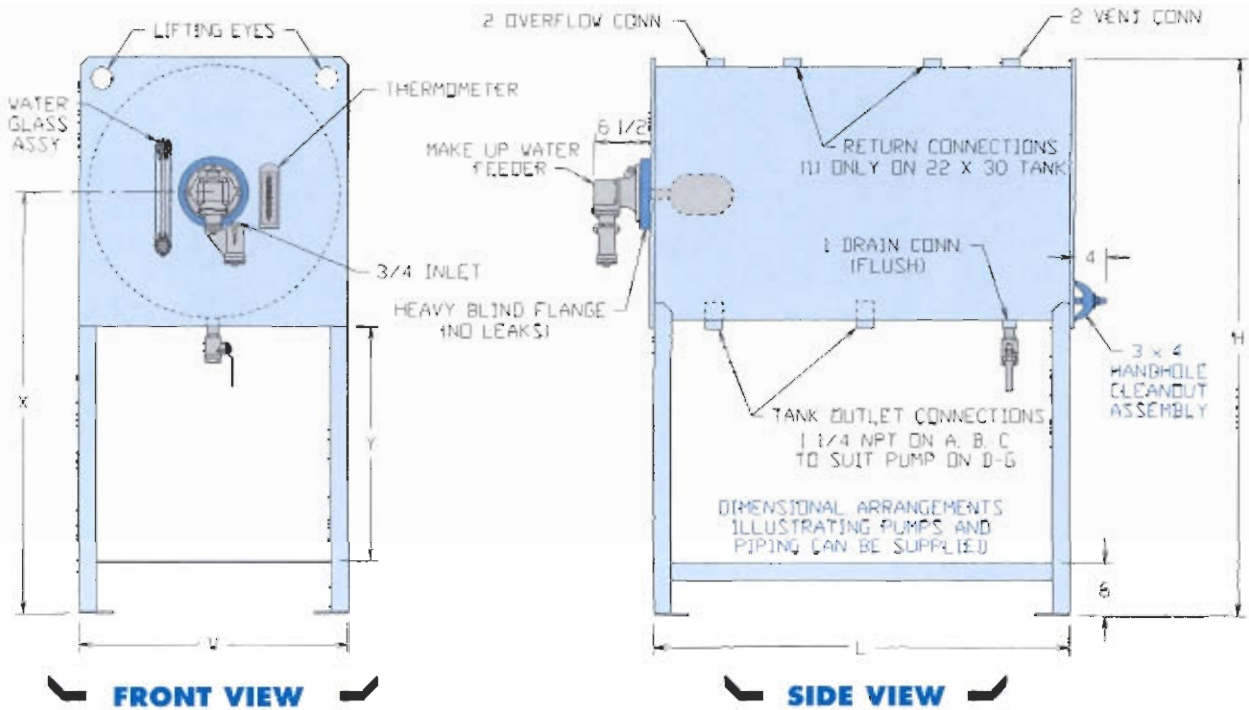
**BOILERSMITH**  
■ CANADA'S BOILER MAKER ■

# CTT-H BOILER FEED SERIES

VERSATILE ■ HORIZONTAL ■ DESIGN

## HORIZONTAL CONDENSATE/FEED TANKS FOR CONDENSATE RETURN AND BOILER FEED

HEAVY GAUGE CONSTRUCTION ■ PREMIUM FEATURES



STANDARD CTT-H SERIES TANK DIMENSIONS AND CAPACITIES

TANK MODEL	HA	HB	HC	HD	HE	HF	HG
TANK SIZE DIA X LENGTH	22 X 30	22 X 36	29 X 48	29 X 60	35 X 60	35 X 84	41 X 84
GAL U.S.	49	59	137	172	250	350	480
GAL IMP.	41	49	114	143	208	291	400
RETURN - (IND. REQ'D) SIZE	(1) 2	(2) 2	(2) 2	(2) 2	(2) 2 1/2	(2) 2 1/2	(2) 3
H - TANK HEIGHT	57	57	60 1/2	60 1/2	74 1/2	74 1/2	85 1/2
L - TANK LENGTH	30 3/8	36 3/8	48 3/8	60 3/4	60 3/4	84 3/4	84 3/4
W - TANK WIDTH	24	24	31	31	37	37	43
X - TANK CL. TO FLOOR*	45	45	45	45	56	56	64
Y - INSIDE STAND*	27	27	23 1/2	23 1/2	31 1/2	31 1/2	36 1/2
WEIGHT (lb)-less pump/motor	315	350	535	760	960	1135	1342

\* CAN BE ADJUSTED ON CUSTOM BUILT TANKS TO SUIT APPLICATION      DIMENSIONS ARE INCHES

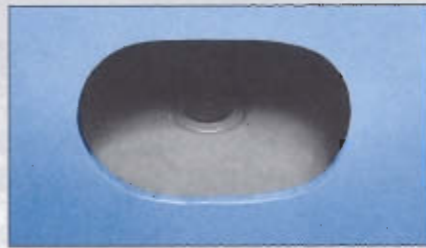
Certified dimensions. Specifications and drawings are available on request.  
We assume no responsibility for errors in data.

**BOILERSMITH**  
CANADA'S BOILER MAKER

# CTP CCT CCX SERIES

## PURPOSE

Wherever possible, the water from used steam, known as condensate, should be returned to the boiler. This condensed water is not only free from corroding minerals, chemicals, and oxygen, but also carries a substantial percentage of the heat necessary to convert it back into steam. Therefore, every pound of hot condensate returned to the boiler saves fuel, prolongs the life of the boiler and reduces stresses from cold water make-up.



- Cleanout Opening, 3 x 4 inch Boiler Type Handhole
- Flush Drain (H Models)

## GENERAL TANK FEATURES

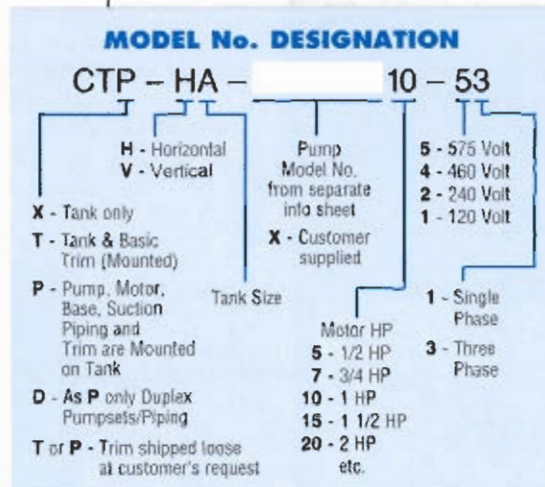
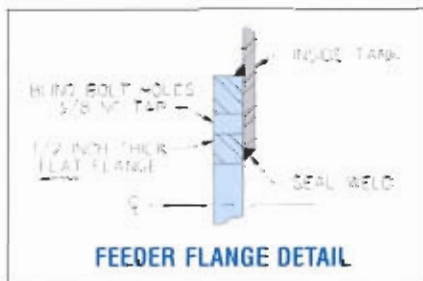
- Heavy Gauge Construction
- Ample Volume
- Extra Surge Capacity
- Cleanout Opening, 3 x 4 inch
- Lifting Provision
- Sediment Pocket
- Tank and Base provided
- 1 inch Drain Connection
- Paint with Clearcoat
- Heavy Feeder Flange with Blind Bolt Holes (see below)

## CTX-V BARE TANK

- Tank of 3/16 inch and 10 gauge steel
- Integral Pump Base
- 2 inch Return Connection
- 2 inch Vent Connection
- 1 1/4 inch Outlet Connection (1 inch on VN)

## CTX-H BARE TANK

- Thicker Steel on Heads of Large Models
- Angle Iron Stand
- Full Pump Platform
- Extra Outlet and Returns



## CTT-V STANDARD TRIM

- 1/2 inch Water Gauge Set
- Glass Bulb Angle Thermometer
- 1 inch Ball Type Drain Valve
- MM #21 Water Feeder with Inlet Strainer

## CTT-H STANDARD TRIM

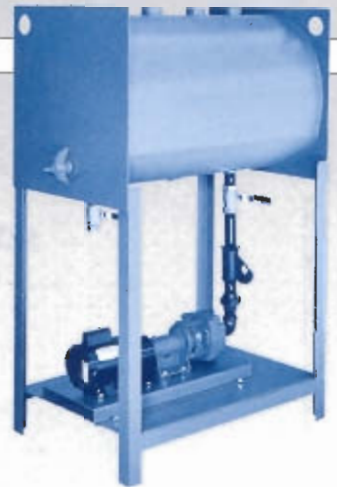
- As CTT-V

## CTP-V STANDARD PACKAGE

- Close Coupled Pump/Motor c/w Mounting Bracket
- 1 1/4 inch Cast Strainer (1 inch on VN)
- 1 1/4 inch Pump Inlet Shut-Off Valve (1 inch on VN)
- Tank to Pump Piping/Fittings
- CONTACT FACTORY FOR PUMP SPECIFICATIONS AND MOTOR ELECTRICS

## CTT-H STANDARD PACKAGE

- Standard CTT-H Trim
- CONTACT FACTORY FOR PUMP, MOTOR AND SUCTION PIPING DETAILS



- Model CTP-HB-ES6M10-11 with foot mount motor

## OPTIONS AND ALTERNATIVES (POA)

- Pump with standard foot mount motor (photo above)
- Feed Water Mixer
- Heater Arrangements
- Shell Insulation & Jacket
- Boiler Mounted Pump wired to boiler
- Duplex Pump Sets
- Motor Starter (may include wiring)
- Feed Water Solenoid
- Economy Mechanical Feeder
- Electric Float Switch for pump control
- Pump Set Less Tank
- Remote Pump Set

## DISCHARGE PIPING KIT (POA)

(Generally recommended for use with CENTRIFUGAL PUMPS)

- Pressure gauge with gauge cock
- Crane No. 7 Globe Valve
- 6 inch long standard black nipple
- 150# standard black malleable tee

## CUSTOMIZED DESIGN

- We specialize in customizing your equipment. Our condensate tanks can be configured to suit a wide variety of installations and specifications. We will help direct you to the most cost effective models and features.

## BE SURE TO SPECIFY

- Boiler HP
- Operating Pressure
- Desired Electrics

Represented by:

**BOILERSMITH**  
CANADA'S BOILER MAKER

P.O. Box 70, 156 Main Street South  
Seaforth, Ontario N0K 1W0  
Tel: (519) 527-0600 Fax: (519) 527-0150

Bulletin No. CAD S105-95

Printed in Canada on Recycled Paper

